



Entertaining Trays

570-693-0396

KLsCatering.com






HOW TO ORDER

Pick-Up Address:
KL's Catering 773 W. 8th St.,
West Wyoming, Pa. 18644
• turn on Donald Lane to park

STEP 1

Advance Orders Only:

-  lamHungry@klscatering.com
-  text: 1-855-773-7276
-  landline only: 570-693-0396

STEP 2

Hot or Cold Pick-Up?

Cold Pick-Up
HEAT AND EAT LATER

Hot Pick-Up
HOT & READY TO EAT

STEP 3

Place your Order by:

**Call for availability -
Inquire before planning**

*Monday for a
Wednesday Pick-Up:*
between 3-6 p.m.

*Wednesday for a
Friday Pick-Up:*
between 3-6 p.m.

SATURDAY PICK-UP

Hot and Ready - Delivery Is Not Available

Call for availability - Inquire before planning

STEP 4

Payment: Cash or Card with a 2.9% Credit Card Surcharge

Prices subject to change without notice. Market conditions may cause items to be unavailable or reflect a surcharge. **Allergy Notice:** Our facility uses equipment shared in our daily operation with equipment that comes in contact with dairy, gluten, shellfish, nuts, peanut oil, peanuts, walnuts, and almonds.

FOOD AND FAMILY

made with love

NEW! Smaller
Family Size Pans

Symbol Legend:



All Beef



Single Layer Item



Multiple Layers



Vegetarian

PAN SIZE REFERENCE:

Family Pan

Holds about 7 cups



1/2 Pan

Holds about 14 cups



Full Size Medium Deep Pan

Holds about 28 cups -

The full size medium tray fits inside a full size full deep chafer water tray





PENNE & VODKA SAUCE

Family Tray 35.⁰⁰
½ Tray 48.⁰⁰
Full Tray 96.⁰⁰



CAPRESE CHICKEN WITH BALSAMIC DRIZZLE

(chicken tenderloins)

10 pcs. 55.⁰⁰

Full Tray - 20 pcs. 110.⁰⁰



SWEET ITALIAN SAUSAGE AND PEPPERS/ONIONS

Family Tray 58.⁰⁰
Full Tray 106.⁰⁰



LAZY LASAGNA PIEROGI CASSEROLE

½ Tray 55.⁰⁰
Full Tray 110.⁰⁰

10 hr. Smoked Pulled Pork

½ Tray 78.⁰⁰
29.⁰⁰ per Quart







Carolina & Apple Jack BBQ Sauce on the Side

***Rolls are Not Included**



Symbol Legend :

 All Beef  Single Layer Item  Multiple Layers  Vegetarian



OLD-FASHION STUFFED CABBAGE

(all beef)
per pc. 4.75 - 12 per tray
½ Tray 57.00



SHEPARD'S PIE

(all beef)
½ Tray 55.00



CHICKEN FRANÇAISE

(chicken tenderloins)
10 pcs. 55.00 | + over pasta 8.00
Full Tray - 20 pcs. 110.00 | + over pasta 16.00



GRILLED CHICKEN ALFREDO

(chicken tenderloins)
10 pcs. 55.00 | + over pasta 10.00
Full Tray - 20 pcs. 110.00 | + over pasta 16.00



BACON CHEDDAR CHICKEN

(chicken tenderloins)
10 pcs. 60.00 | + over mashed potato 8.00
Full Tray 20 pcs. 120.00 | + over mashed potato 16.00



CHICKEN MARSALA

(chicken tenderloins)
10 pcs. 60.00 | + over mashed potato 8.00
Full Tray 20 pcs. 120.00 | + over mashed potato 16.00



Signature Dishes!

From our recipe box to your table.
We have been making these
scrumptious dishes for over 20
years!



CLASSIC MEAT LASAGNA

½ tray 55⁰⁰

Deep Dish or Full Med. 89⁰⁰



VEGETABLE LASAGNA

½ tray 55⁰⁰

Deep Dish or Full Med. 89⁰⁰

Choice of: Penne or Spaghetti	family tray	½ tray	full-medium	
Blush Sauce	32. ⁰⁰	45. ⁰⁰	90. ⁰⁰	V
Vodka Sauce	35. ⁰⁰	48. ⁰⁰	96. ⁰⁰	V
Home-Made Sauce and Melted Cheese on Top	35. ⁰⁰	43. ⁰⁰	86. ⁰⁰	V
All Beef Meat Sauce with Melted Cheese on Top	39. ⁰⁰	49. ⁰⁰	96. ⁰⁰	
Alfredo Sauce	39. ⁰⁰	49. ⁰⁰	98. ⁰⁰	V
Light Scampi Sauce	35. ⁰⁰	48. ⁰⁰	96. ⁰⁰	V
Garlic Sauce	32. ⁰⁰	42. ⁰⁰	84. ⁰⁰	V
Garlic Sauce with Broccoli	36. ⁰⁰	45. ⁰⁰	90. ⁰⁰	V

Symbol Legend:



All Beef



Single Layer Item



Multiple Layers



Vegetarian



BONELESS FRIED CHICKEN

Bnls Breast 3.65 Bnls Thigh 3.50
Chicken Tender 2.25
Minimum 12 pcs.
Free Wing Sauce on the Side



LARGE ALL BEEF HOME-MADE MEATBALLS & SAUCE

(sauce made with California Tomatoes)

25 tray 54.⁰⁰
50 tray 98.⁰⁰
(single layer)



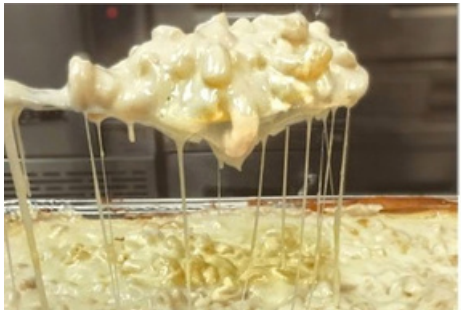
CHICKEN SCAMPI

10 pcs. 55.⁰⁰ | + over pasta 8.⁰⁰
Full Tray - 20 pcs. 110.⁰⁰ | + over pasta 16.⁰⁰



EGGPLANT PARMESAN

6 full size pcs or 12 cut in half
½ tray 48.00 | + a side a pasta - 8.⁰⁰



DREAMY CREAMY MACARONI AND CHEESE

Family Tray 29.⁰⁰
½ pan Tray 39.⁰⁰
Full Tray 78.⁰⁰



CHICKEN PARMESAN

6 pcs. 48.⁰⁰ | add a side a pasta - 8.⁰⁰
Full Tray - 16 pcs. 95.⁰⁰ | add a side a pasta - 16.⁰⁰



More Scrumptious Trays

Sliced Roast Beef (average market)

Call for Current Price 1/2 tray

CALL



Cheese Stuffed Shells-Full Size Tray 36 pcs

85.⁰⁰



Swedish or Teriyaki Meatballs 
(all beef-medium size)

36 tray 54.⁰⁰

72 tray 98.⁰⁰
(single layer)

Dorito Meatballs Drizzled w Apple Jack BBQ Sauce (all beef-large size)

25 tray 54.⁰⁰

50 tray 98.⁰⁰
(single layer)

Side Trays

SIZE: BY THE 1/2 TRAY ONLY

Mashed Potato and 1 Pint of Gravy	39. ⁰⁰
Shells with Broccoli	45. ⁰⁰
Home-Made Haluski with Hand-Stretched Noodles (labor intensive)	49. ⁰⁰
Hand Sliced Russet Scalloped Potato	49. ⁰⁰
Rice Pilaf	39. ⁰⁰
Green Bean w Sweet Cream Butter Sauce	35. ⁰⁰
Garden Salad w 2 side dressings	39. ⁰⁰
Field Green w 2 side dressings	45. ⁰⁰
Sweet Cole Slaw	38. ⁰⁰
Potato Salad with Egg	45. ⁰⁰
Vegetable Pasta Salad	45. ⁰⁰
Macaroni Salad with Egg	45. ⁰⁰
Rice with Grilled Corn, Black Beans,	49. ⁰⁰
Bell Peppers Seasoned Southwestern Style	
<small>(no salt available)</small>	
Grilled Vegetables over White Rice	49. ⁰⁰
Greek Pasta Salad w Feta	49. ⁰⁰
Chinese Cold Noodle Salad	49. ⁰⁰



KLsCatering.com All prices subject to change without notice and are subject to 6% PA Sales Tax. Tax is not included in prices.

Common FAQ

Q: Is PA Tax Included in Price?

A: No. Add PA State Sales Tax Rate of 6% to total bill.

Q: How much does each pan feed?

A: This is not a one size fits all answer. It depends on your family, type of function, the combination of your total main entrees and side dishes you are serving, and your families' appetites. For example, if your guests are a fan of mac and cheese, then we advise you to order a larger quantity since it is a family favorite. If you are having football gathering and most of your guests are hearty eaters, by all means, order according to your guests appetites.

Tray Maximum Capacity Based On Cups:

Family Tray - 7 Cups

1/2 Tray - 14 Cups

Full-Size Medium Tray - 28 cups

(Tray capacity examples - Family tray of mac and cheese is 7 cups, 1/2 tray of Penne is 14 cups etc..)

Q: What type of chicken do you use? A: Unless there is a market shortage/purchase restriction, we use **chicken tenderloins** for most of our chicken entrees unless other- wise noted. (Exceptions are Stuffed Chicken Breast, Boneless Southern Fried Chicken etc....)

Q: How much chicken do I order per person? A: Order at least one piece of chicken per person and one portion each of all other items. Some guests may not take one portion of each item but some will take double if it is their favorite.

Q: How much does each pan weigh? A: All trays are approximate, and weight will vary based on the item. For example, a half pan of salad will not weigh the same amount as a half pan of mac and cheese.

Q: When should I order my trays? A: **For Trays:** Order by Monday for Wednesday and order by Wednesday for Friday. Weekend tray orders are dependent on catered events. Call in advance to preplan your event. We may be unavailable on pick-up days due to off-premise events.

Q: Do you deliver items by the tray? A: We do not offer delivery for trays. All items-by-the-tray orders must be picked up at our kitchen.

Q: Do you offer Gluten-Free? A: Some main and side dishes can be altered by using gluten-free ingredient substitutes. Inquire for a list of those dishes.

Perfect for your
next family gathering.



*How much did you pay for
your last hamburger?*



To Order Call: 570-693-0396





We are closed
on all Major Holidays
